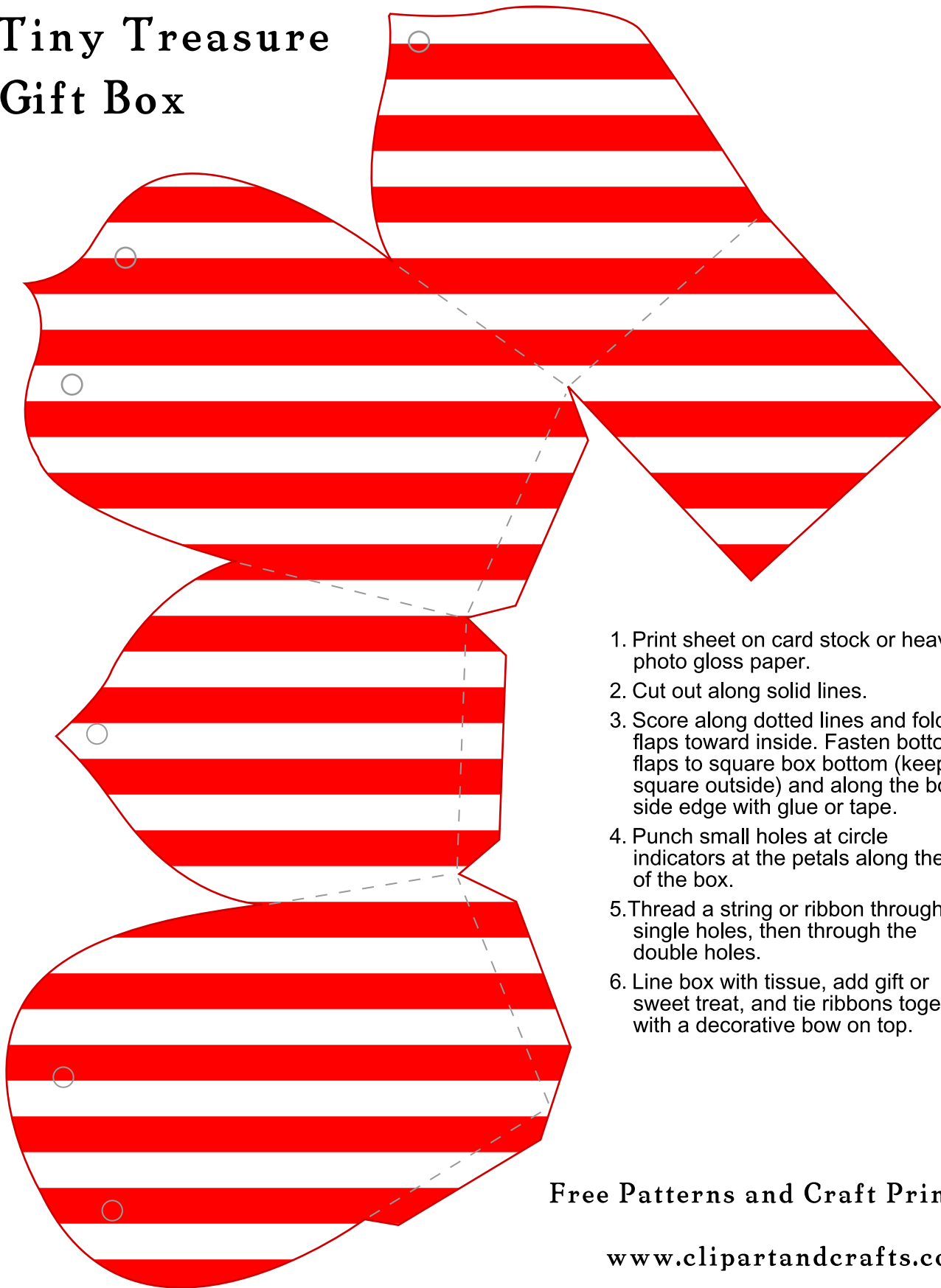


Sweet Treat Tiny Treasure Gift Box



1. Print sheet on card stock or heavy photo gloss paper.
2. Cut out along solid lines.
3. Score along dotted lines and fold flaps toward inside. Fasten bottom flaps to square box bottom (keep square outside) and along the box side edge with glue or tape.
4. Punch small holes at circle indicators at the petals along the top of the box.
5. Thread a string or ribbon through single holes, then through the double holes.
6. Line box with tissue, add gift or sweet treat, and tie ribbons together with a decorative bow on top.

Free Patterns and Craft Printables

www.clipartandcrafts.com